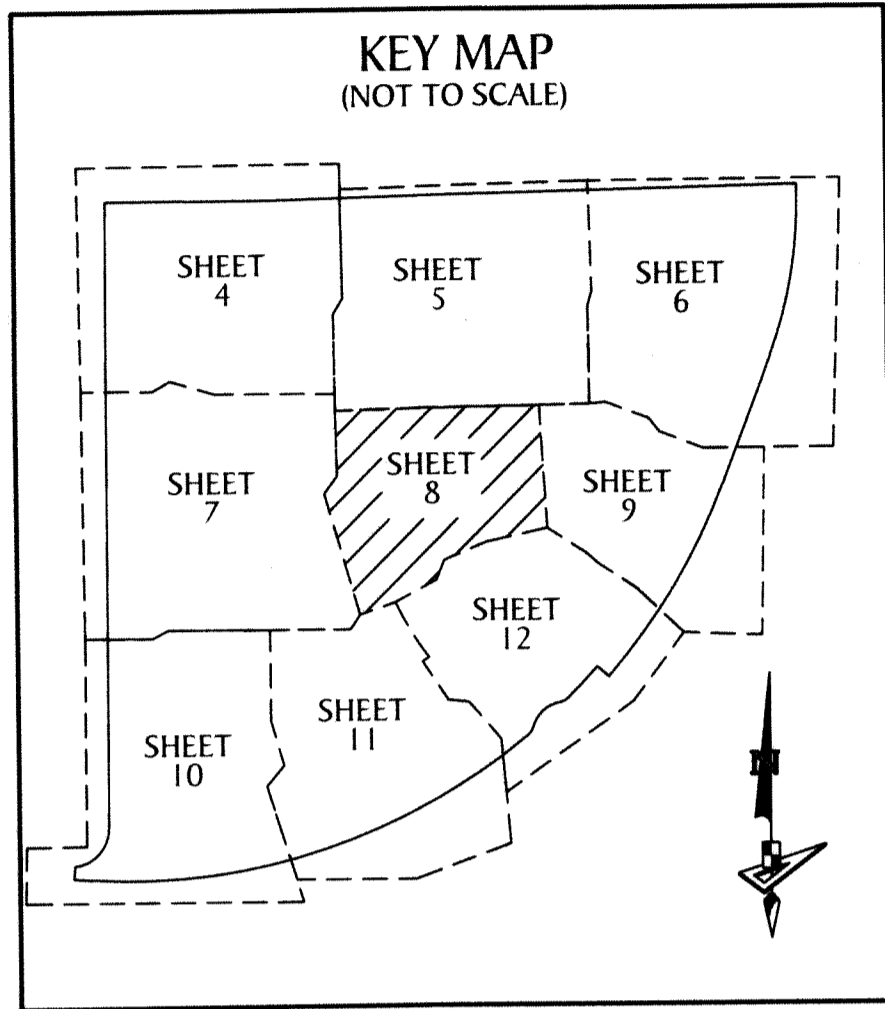


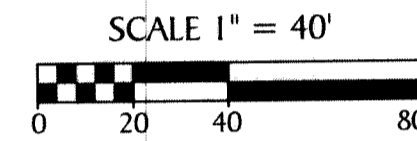
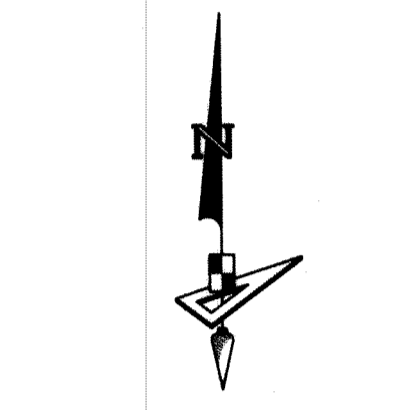
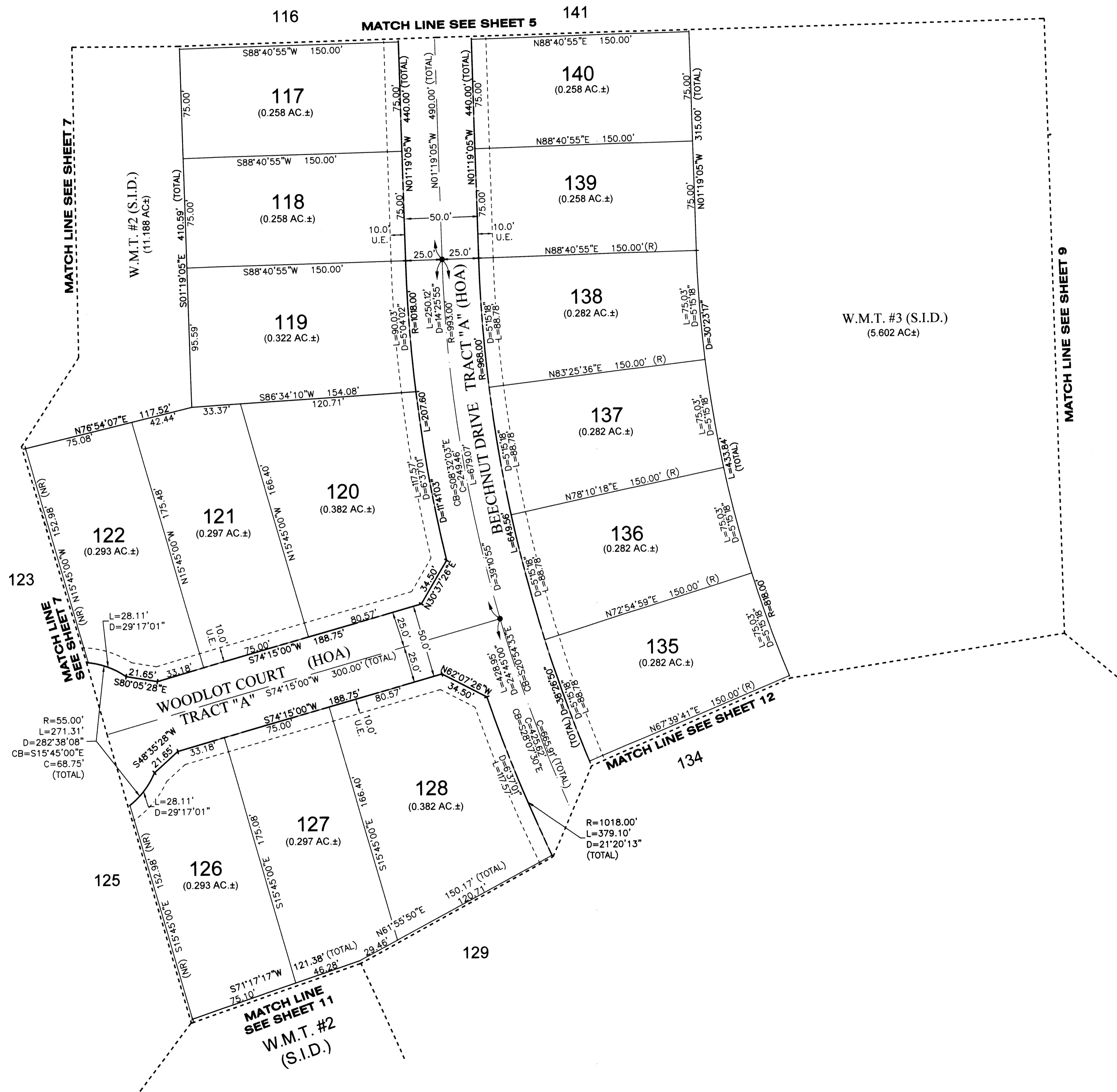
# WOODLANDS OF WESTLAKE

BEING A PORTION OF SECTIONS 5 AND 6, ALL IN  
TOWNSHIP 43 SOUTH, RANGE 41 EAST,  
CITY OF WESTLAKE, PALM BEACH COUNTY, FLORIDA.

174



- LEGEND**
- P.O.B. ----- POINT OF BEGINNING
  - P.O.C. ----- POINT OF COMMENCEMENT
  - P.B. ----- PLAT BOOK
  - D.B. ----- DEED BOOK
  - O.R./O.R.B. ----- OFFICIAL RECORDS BOOK
  - PG./PG(s) ----- PAGE(S)
  - NAD ----- NORTH AMERICAN DATUM
  - W.M.T. ----- WATER MANAGEMENT TRACT
  - O.S.T. ----- OPEN SPACE TRACT
  - P.B.C. ----- PALM BEACH COUNTY
  - U.E. ----- UTILITY EASEMENT
  - D.E. ----- DRAINAGE EASEMENT
  - F.M.E. ----- FORCE MAIN EASEMENT
  - W.M.E. ----- WATER MAIN EASEMENT
  - L.M.A.E. ----- LAKE MAINTENANCE ACCESS EASEMENT
  - 6-43-41 ----- SECTION-TOWNSHIP-RANGE
  - R ----- RADIUS
  - L ----- ARC LENGTH
  - D ----- DELTA ANGLE
  - CB ----- CHORD BEARING
  - C ----- CHORD
  - C.C. ----- COMPOUND CURVATURE
  - R.C. ----- REVERSE CURVATURE
  - N.T.C. ----- NON-TANGENT CURVATURE
  - P.C. ----- POINT OF CURVATURE
  - P.T. ----- POINT OF TANGENCY
  - R/W ----- RIGHT-OF-WAY
  - (R) ----- RADIAL
  - (NR) ----- NON-RADIAL
  - HOA ----- HOMEOWNERS ASSOCIATION
  - S.I.D. ----- SEMINOLE IMPROVEMENT DISTRICT
  - PRM ----- PERMANENT REFERENCE MONUMENT
  - ----- PERMANENT CONTROL POINT
  - ----- FOUND PERMANENT REFERENCE MONUMENT
  - ----- SET 4"x4" CONCRETE MONUMENT WITH 2" ALUMINUM DISK STAMPED "PRM LB 7768"



SEE NOTE ON SHEET 2 FOR BASIS OF BEARINGS



4152 W. Blue Heron Blvd. Phone: (561) 444-2720  
Suite 105 www.geopointsurvey.com  
Riviera Beach, FL 33404 Licensed Business Number LB 7768